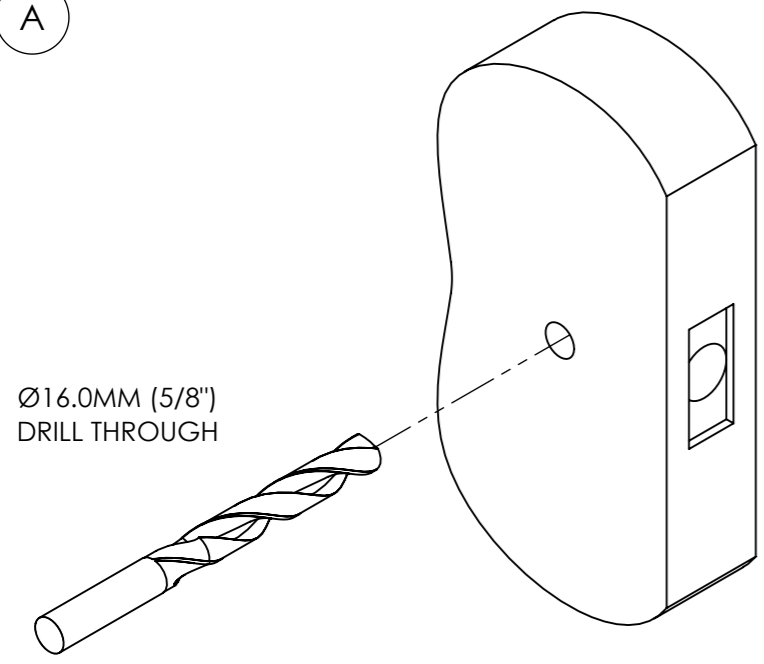


IDL-025 - STEPPED DOOR LEVER - FITTING INSTRUCTIONS



TUBULAR LATCH

A

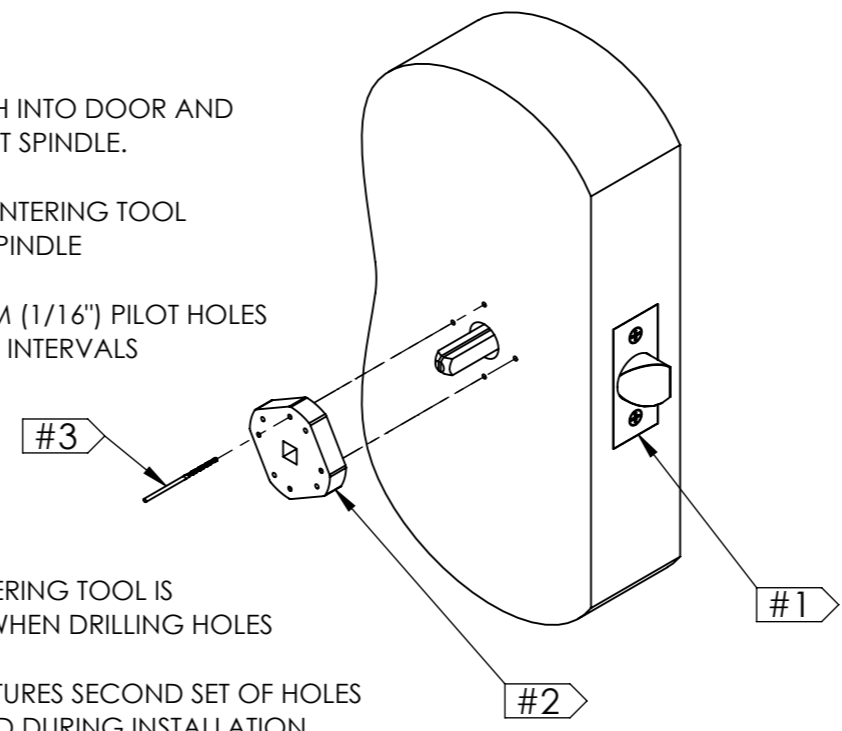


Ø16.0MM (5/8")
DRILL THROUGH

*FULLY INSTALL ONE HANDLE
BEFORE MOVING ONTO OTHER SIDE

B

1. INSTALL LATCH INTO DOOR AND INSERT SPINDLE.
2. PLACE CENTERING TOOL OVER SPINDLE
3. DRILL 4X Ø1.5MM (1/16") PILOT HOLES AT 90° INTERVALS

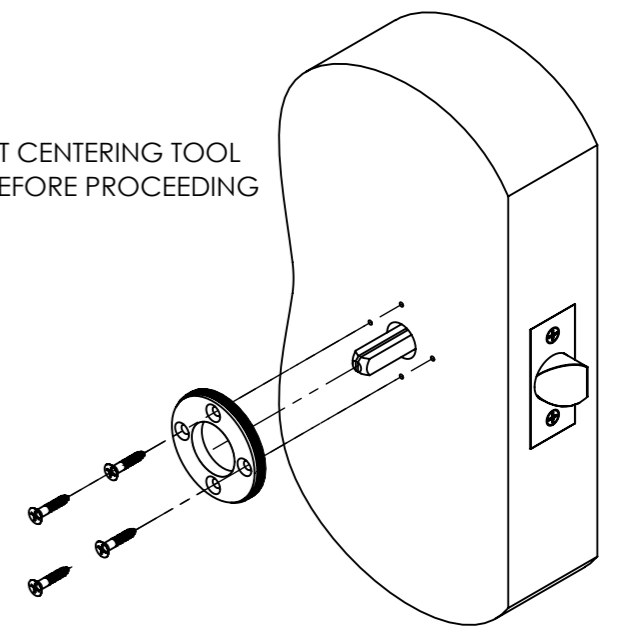


*ENSURE CENTERING TOOL IS
FLAT AGAINST DOOR WHEN DRILLING HOLES

*CENTERING TOOL FEATURES SECOND SET OF HOLES
OFFSET, IF REQUIRED DURING INSTALLATION

C

*ENSURE THAT CENTERING TOOL
IS REMOVED BEFORE PROCEEDING

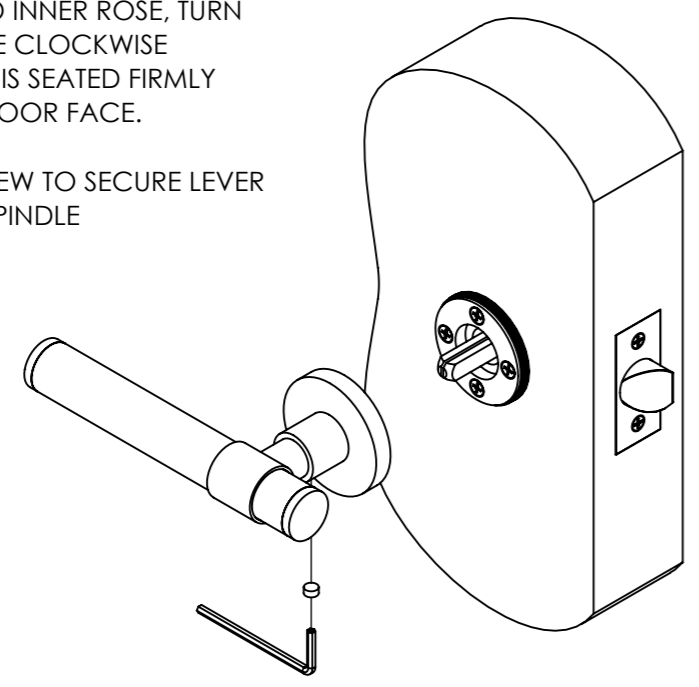


FIX INNER ROSE TO DOOR
USING WOOD SCREWS SUPPLIED

D

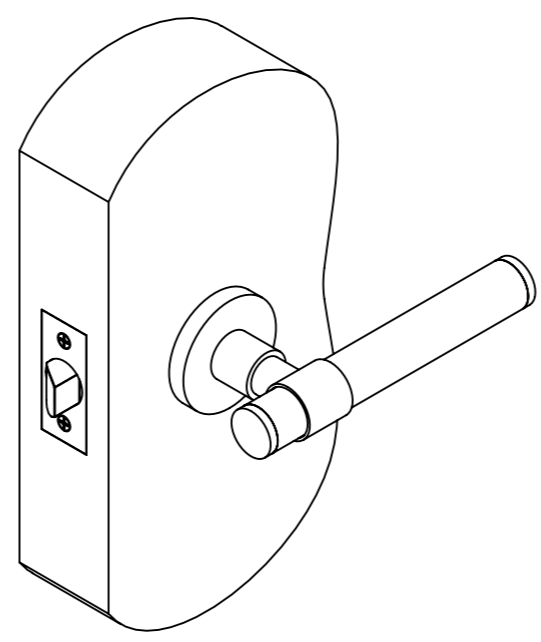
ALIGN OUTER AND INNER ROSE, TURN
OUTER ROSE CLOCKWISE
UNTIL THE ROSE IS SEATED FIRMLY
ON THE DOOR FACE.

TIGHTEN GRUB SCREW TO SECURE LEVER
TO SPINDLE



*DO NOT FORCE INNER AND OUTER ROSE
TOGETHER, THIS WILL DAMAGE THE INNER ROSE

E



REPEAT INSTRUCTIONS FOR OTHER SIDE
OF DOOR

FIXING KIT

