

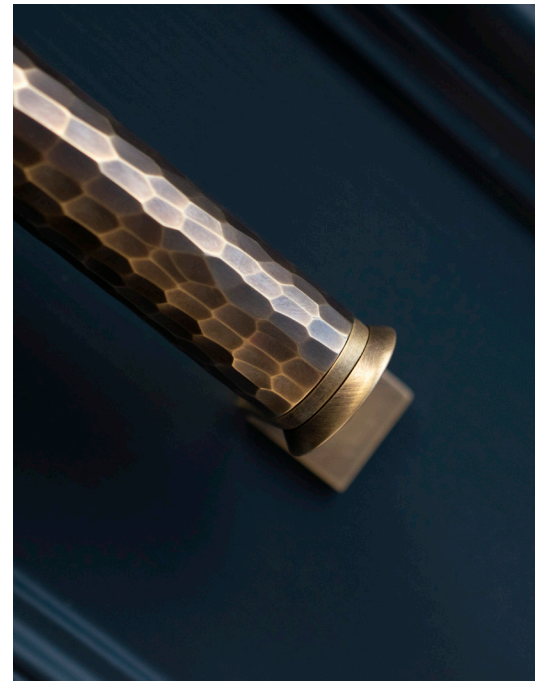
BRACKET CABINET PULLS

Designed by Christina Roberts, Turnstyle's new Bracket pull handles were inspired by a 1950's vintage kitchen dresser Christina found in a local reclamation yard.

A simpler principle of Turnstyle's best-selling designs, was created with a chunkier grip. This includes hammered and solid brass, hand stitched leather, and their trademark Amalfine™ designs such as Wire, Faceted and Woven.

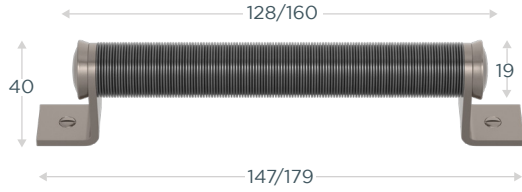
These are all set between two L shaped brass brackets and finished with an elegant domed fixing.

The Bracket is fixed with domed screws adding a retro look. Set either horizontally or vertically, this new versatile pull is going to look fantastic on transitional kitchens and cabinetry. Available in two different sizes as well as all of Turnstyle's signature materials there are over 300 different finish combinations to choose from.

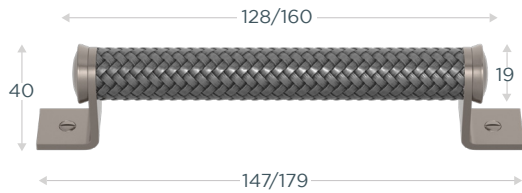


AMALFINE™

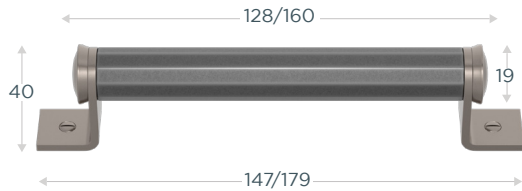
WIRE - KA1001



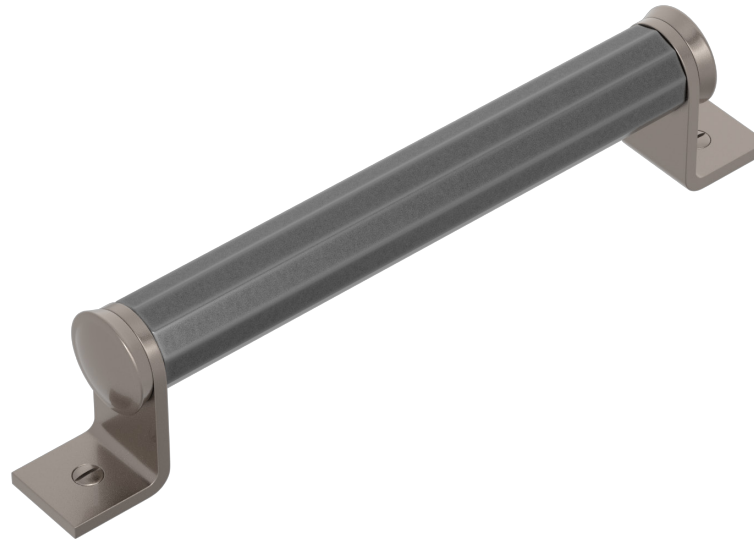
WOVEN - KA1442



FACETED - KA1902



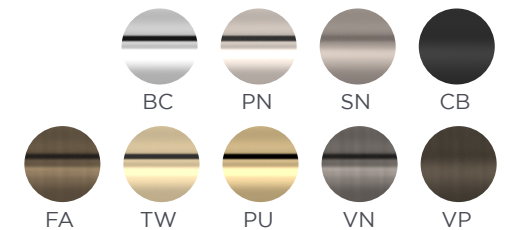
NAME	CODE	CENTRE (mm)	LENGTH (mm)	PROJECTION (mm)	WIDTH (mm)
WIRE	KA1001-128	128	147	40	19
WIRE	KA1001-160	160	179	40	19
WOVEN	KA1442-128	128	147	40	19
WOVEN	KA1442-160	160	179	40	19
FACETED	KA1902-128	128	147	40	19
FACETED	KA1902-160	160	179	40	19



AMALFINE™ FINISHES

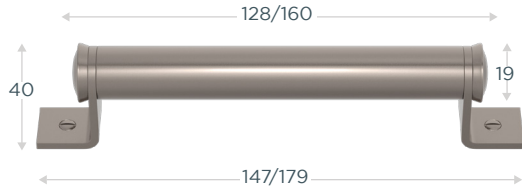


METAL FINISHES



SOLID

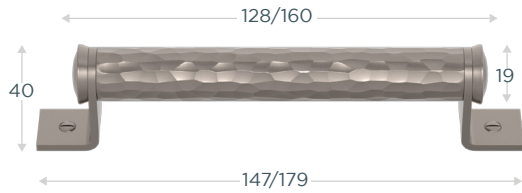
BARREL - KS3322



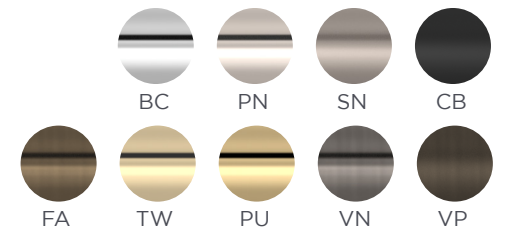
NAME	CODE	CENTRE (mm)	LENGTH (mm)	PROJECTION (mm)	WIDTH (mm)
BARREL SOLID	KS3322	128	147	40	19
BARREL SOLID	KS3322	160	179	40	19
BARREL SOLID HAMMERED	HK3322	128	147	40	19
BARREL SOLID HAMMERED	HK3322	160	179	40	19

SOLID HAMMERED

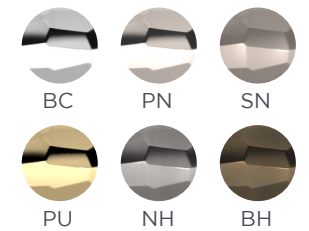
BARREL - HK3322



SOLID FINISHES

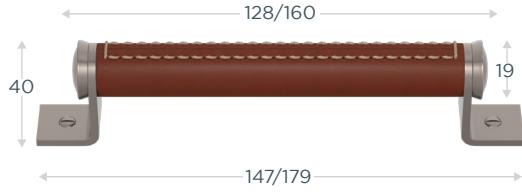


SOLID HAMMERED FINISHES



LEATHER

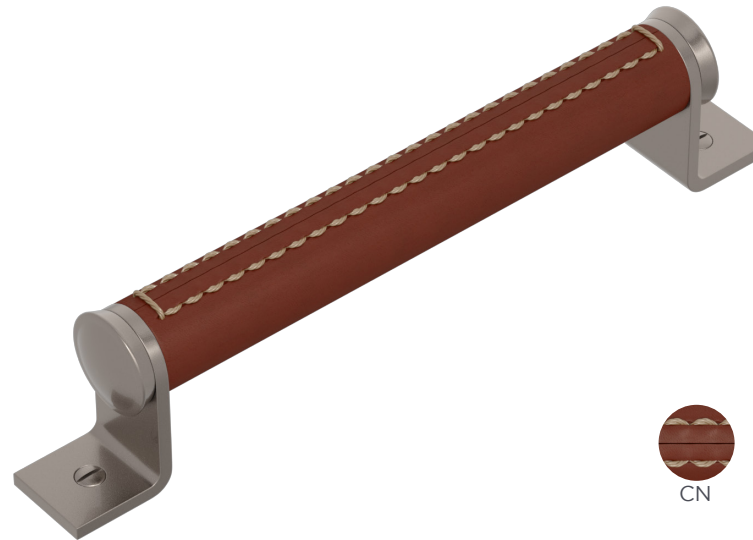
BARREL (STITCH OUT) - KL5787



BARREL - KL5099



NAME	CODE	CENTRE (mm)	LENGTH (mm)	PROJECTION (mm)	WIDTH (mm)
BARREL (STITCH OUT)	KL5787	128	147	40	19
BARREL (STITCH OUT)	KL5787	160	179	40	19
BARREL	KL5099	128	147	40	19
BARREL	KL5099	160	179	40	19



LEATHER FINISHES



SOLID FINISHES

